

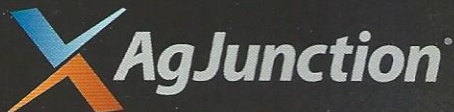
SATLOC®

Satloc® HQ Sync

Interconnection and wireless data transfer



- Review order volume, product requirements, ground crew availability, asset location and other logical needs to efficiently manage your operation
- Manage remote locations and pilots
- Link your G4 directly to AgSync
- Manage work orders, completion data and log files seamlessly with HQ Sync



2207 Iowa Street
Hiawatha, Kansas 66434 USA

(785) 742-2976
Toll Free US 800-247-3808
Toll Free Canada 866-888-4472

SATLOC®

www.SATLOC.com

SATLOC®

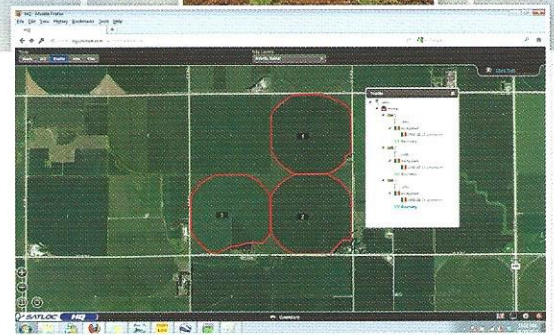
HQ™

Asset Tracking System



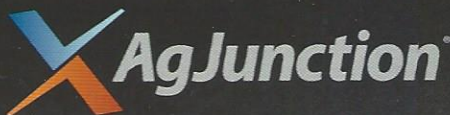
HQ™ is a real-time web-based asset tracking tool that allows companies to track the position and position-related data of aircraft and other assets, such as spotter vehicles and loader trucks. Combining a cell-based modem with the Satloc G4 aerial guidance system, HQ provides the ability to more effectively coordinate flight plans, resulting in reduced time and costs.

HQ is ideally suited for companies that need to track multiple aircraft in flight at the same time. The AgJunction-managed web server stores all flight and asset information, allowing customers to view current flight data as well as all historical data from previously completed flights. Aerial application companies can also provide their customers the access to log in via the web interface to view spray on/off, spray rates, and latitude/longitude information to quickly analyze what jobs are being done and when. Realize greater efficiency and safety through improved flight planning and better ground crew preparation with HQ.



Benefits

- Track the position and position-related data of aircraft and other assets
- Effectively coordinate flight plans, resulting in reduced time and costs
- View current flight data as well as historical data from previously completed flights
- Web interface allows users to view spray on/off, spray rates and latitude/longitude information
- Greater efficiency and safety through improved flight planning and better ground preparation



2207 Iowa Street
Hiawatha, Kansas 66434 USA

(785) 742-2976
Toll Free 800-247-3808

SATLOC®

www.SATLOC.com

SATLOC®

IntelliFlow

Automatic Flow Control System (for liquids)



Air IntelliFlow®

IntelliFlow

With the IntelliFlow™ control system on board, spray rates will be automatically controlled with an accurate constant flow or a variable rate based on prescription maps (PMAPs). The required flow rates can be pilot selected or PMAPs can be created using Satloc MapStar® desktop software.

Applications include:

- Aerial agricultural crop applications
- Forestry applications
- Demanding eradication suppression spray program
- Size options include 1/2", 3/4", 1 1/2", 2", and 3"

The IntelliFlow system consists of a controller, valve with motor, and meter with magnetic sensor. Multiple sizes and configurations can be chosen for the valve and meter.

SATLOC®

HQ™

Asset Tracking System

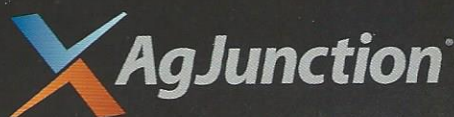


HQ™ is a real-time web-based asset tracking tool that allows companies to track the position and position-related data of aircraft and other assets, such as spotter vehicles and loader trucks. Combining a cell-based modem with the Satloc G4 aerial guidance system, HQ provides the ability to more effectively coordinate flight plans, resulting in reduced time and costs.

HQ is ideally suited for companies that need to track multiple aircraft in flight at the same time. The AgJunction-managed web server stores all flight and asset information, allowing customers to view current flight data as well as all historical data from previously completed flights. Aerial application companies can also provide their customers the access to log in via the web interface to view spray on/off, spray rates, and latitude/longitude information to quickly analyze what jobs are being done and when. Realize greater efficiency and safety through improved flight planning and better ground crew preparation with HQ.

Benefits

- Track the position and position-related data of aircraft and other assets
- Effectively coordinate flight plans, resulting in reduced time and costs
- View current flight data as well as historical data from previously completed flights
- Web interface allows users to view spray on/off, spray rates and latitude/longitude information
- Greater efficiency and safety through improved flight planning and better ground preparation



2207 Iowa Street
Hiawatha, Kansas 66434 USA

(785) 742-2976
Toll Free 800-247-3808

SATLOC®

www.SATLOC.com

SATLOC®

Satloc L7 Lightbar

Advanced GPS Guidance for aerial applications



- Four window display
- Easily mounted using existing hardware and cable
- Sun visor available
- Customized display options
- Compatible with G4, Bantam, LSII and M3

Specifications

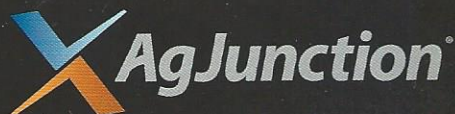
L7 Lightbar

Dimensions:

2.53 in H x 14.60 in W x 5.94 in D
(6.4 cm H x 37 cm W x 15 cm D)

Weight:

4.25 lbs (1.92 kg)



2207 Iowa Street
Hiawatha, Kansas 66434 USA

(785) 742-2976
Toll Free US 800-247-3808
Toll Free Canada 866-888-4472

SATLOC®

www.SATLOC.com