



N978AP

CESSNA SKYHAWK SP



Cessna
A Textron Company

THE TRAINER OF CHOICE AMONG THOSE WHO KNOW

Embry-Riddle Aeronautical University. The University of North Dakota. And flight academies around the world. Institutions of higher learning that know a thing or two about airplanes and teaching people to fly. If you ask them, they'll tell you that the last thing they want from the aircraft in their fleets is surprises. That's why when you look across their flight lines, you see row after row of Cessna Skyhawks.

The Skyhawk SP is the ultimate "no surprises" aircraft. Its all-glass Garmin G1000 integrated flight deck and forgiving flight characteristics make it a favorite of students, while its proven, robust construction and reliability endear it to flight-school operators. Mix in low operating costs and the unsurpassed backing of Cessna Aircraft Company, and the trainer of choice is obvious.

SKYHAWK SP





N907EI

Cessna

SKYHAWK



N978AP



DEFIES GRAVITY AS EASILY AS IT DOES EXPECTATIONS

Whether your motivation is to fly farther without refueling, or to simply have more options as to what or who comes along, the Skyhawk SP gives you the useful load to expand your options. The advantages go beyond what you can carry: The Skyhawk SP harnesses the power of 180 horses to a high-performance McCauley propeller with a polished chrome spinner. Combined with the impressive capabilities of the Garmin G1000 avionics suite and the available GFC 700 autopilot, the Skyhawk SP delivers the enhanced safety and reliable performance that are synonymous with the Cessna name.



SKYHAWK SP

EXTERIOR COLORS

Give your Skyhawk SP a little streak of personality. Choose from three distinctive color combinations.

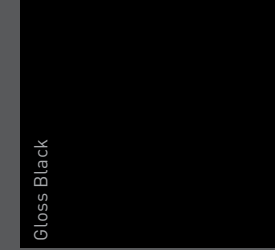


STRIPE COLORS

Sunflower Yellow



Gloss Black



Charcoal Met



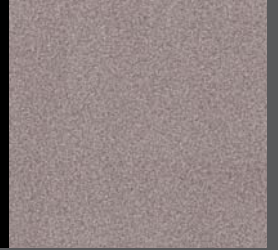
Burgundy Met



Azure Blue Met



Silver Met



Option #524



Azure Blue Met



Gloss Black



Silver Met



Option #524A



Sunflower Yellow



Gloss Black



Charcoal Met



Option #524B



Gloss Black



Burgundy Met



Charcoal Met





INTERIOR

Comfort is a necessity for sustaining the vitality and readiness of a pilot over the course of a long flight. Settle into the cabin of a Skyhawk SP, and you'll find deep-contoured leather seats, ergonomically designed to keep your circulation flowing and your body fresh. Cabin air controls with enhanced multilevel ventilation keep the cockpit comfortable, while advanced soundproofing keeps both your cabin and your head insulated from extraneous noise. LED interior lighting illuminates the cockpit with a warm glow that's both extremely durable and reduces eyestrain.

Not every flight is all work. The wraparound windows and high-wing design of the Skyhawk SP allows passengers and pilot to enjoy panoramic views of their surroundings. Enjoy your favorite music or radio shows using the optional XM Satellite Radio feature on the G1000. Furthermore, a standard 12-volt power outlet can keep laptops and other devices charged up and running for passengers wanting to work or play during longer flights.





Spacious, leather-appointed rear seats



Optional three-seat training configuration

AVIONICS

G1000: OVERVIEW Custom designed for Cessna, the all-glass Garmin G1000 avionics suite integrates all primary flight, engine and sensor data to provide intuitive, at-a-glance situational awareness. Real-time flight-critical data is gathered and displayed on two configurable large-format, high-resolution screens, enabling the pilot to control all the necessary aspects of flight without diverting attention from the avionics or the course ahead.

One of the advantages of the Garmin G1000 is the optional GFC 700 autopilot. The GFC 700 provides in-flight support features that, until recently, could only be found on larger commercial aircraft, such as a Go Around button and flight-level change. Once programmed and engaged, the GFC 700 is capable of performing virtually all of the necessary pilot actions between climb-out and final descent. With precise vertical and horizontal guidance, it puts you right on the nose of your approach and can even schedule airspeeds for both climbs and descents. And is available with every new Cessna ranging from the Skyhawk SP to the Citation Mustang, any transition to a higher-performance Cessna is that much smoother and more intuitive.



G1000: FEATURES*

These magenta rectangular pathways provide a visual window to help pilots follow the intended flight route. Spaced no more than 1,000 meters apart, they have guidelines in each corner that point in the direction of the active flight plan leg.



*Simulated flight information

Using Synthetic Vision Technology (SVT), the Towers and Obstacles database makes awareness of non-terrain structural hazards crystal clear, even in low visibility.



ENHANCED VISION SYSTEM

The optional Enhanced Vision System (EVS) provides an infrared view outside the cockpit that turns night into day and improves vision through smoke and haze. A perfect complement to the G1000's Synthetic Vision Technology, EVS provides a real-time moving image of the outside environment, illuminating possible hazards lurking in the dark.

The EVS feed may be displayed in large format on the G1000's MDF for easy reference on approach and then reduced in size and shown alongside the airport map to aid in ground maneuvers. EVS greatly enhances situational awareness in flight and on the ground with virtually no weight penalty, increasing the utility of your Skyhawk SP and enhancing peace of mind for pilot and passengers alike.



View with EVS.



View without EVS.



The topographical display provides excellent situational awareness over all kinds of terrain. The color-specific overlays clearly indicate potential terrain conflict areas.



Garmin Traffic Advisory System (TAS)



This optional "electronic set of eyes in the sky" helps detect and display the position of transponder-equipped aircraft. This system combines both active and passive surveillance to correlate target data and provide more advanced real-time traffic information to the pilot. With CLEAR CAS™ technology, instead of hearing the basic "traffic, traffic" the system gives you ATC-like audio alerts "Traffic: 10 O'Clock, High, 2 miles".



TAKE IT TO A HIGHER LEVEL BEFORE YOU EVEN STEP INTO THE PLANE

The Skyhawk SP is an ideal platform for student pilots as well as experienced pilots seeking a modern and economical means of recreational flight. With stable, forgiving flight characteristics and expansive views provided by the large windows, students can learn the skills they need to become safe and self-assured pilots in a confidence-inspiring aircraft. Furthermore, the Garmin integrated flight deck is the same state-of-the-art, all-glass avionics suite used in our higher performance propeller aircraft along with our Citation Mustang and Citation M2 models. So should your mission change, your transition between aircraft will be significantly smoother.

For flight schools and instructors, an aircraft is an investment. To this aim, the robust, high-strength construction of the Skyhawk SP ensures that it will be valuable assets to any instructional facility for many years to come.

Cessna's Learn to Fly program is tailored to the needs of today's aspiring pilots. This contemporary, web-based training system is situation based: Rather than simply teaching maneuvers, instructors present customized scenarios that help enhance decision-making abilities while teaching pilots the skills they need within their respective training environments.

Contact us today at LearnToFly.com and let your dreams take flight.

SERVICE AND SUPPORT

No matter where you fly, your Skyhawk SP is always close to home. Our network of over 300 service stations worldwide can provide you with exceptional service and support to ensure the maximum uptime for your aircraft and the utmost safety for its occupants.

With satellite locations around the world, Cessna Service Parts & Programs (CSP&P) ensures even the most pressing parts demands are met with minimal AOG time. Whether the order is for a 1935 C-34 or a brand-new Skyhawk SP, we

don't rest until the right part is in the safe hands of one of our knowledgeable service and repair experts.

And no matter your need, one easy point of contact puts you in touch with a Cessna expert who can deliver: Simply call 1-800-4-CESSNA (+1-316-517-6056), or go to Cessna.com. Wherever you are, you'll always find us standing ready to serve you.



EXPECT A HIGHER CONNECTION.

INTRODUCING CESSNA CONNECT™



Passions should be shared. And fostered. And preserved. We actually think the secret smile on your face at the end of every flight should be captured sometime around two minutes after touchdown, and recorded permanently for everyone to see.

We also think that smile should stay on your face, even through the necessary next steps: recording your times, updating your logbook, staying on top of service bulletins, and tracking your plane's maintenance schedule and performance.

This is Cessna Connect, a complete technology program with the most innovative and thoughtful tools to help you easily navigate ownership and extend your enthusiasm—from the cockpit, from the air, or from anywhere.

TAILORED TECHNOLOGY.

Designed specifically for Cessna aircraft owners, Cessna Connect is a customized cloud-based program that fully automates aircraft record-keeping and keeps you connected with your service team. It also connects you with fellow owners and enthusiasts that share your excitement for where you just came from, and how high you just flew.

Stay Connected to Cessna.

Cessna Connect promotes the most pro-active approach to managing your aircraft. You will receive essential communications and have the option of working directly with a Cessna Authorized Service Facility to automate everything from service requests to maintenance records.

In With the New.

Your logbook, flights, expenses, tax reports and partnership splits (if applicable) can all be tracked online. Cessna Connect offers a dedicated iPad application, giving you access to every record, accessible anytime, from anywhere.

The Cool Factor.

Not that showing off is promoted, but why not? Your personal Cessna Connect will post every flight in 3D with Google Earth Maps. Share flights, photos, comments, and invite fellow owners into your Cessna Circle of Friends to exchange ideas and cultivate your love of flying...faster than him!





SPECIFICATIONS

Skyhawk SP

AIRCRAFT DIMENSIONS

Overall Height	8 ft 11 in (2.72 m)
Overall Length	27 ft 2 in (8.28 m)
Wingspan	36 ft 1 in (11.00 m)

CABIN DIMENSIONS

Height	48 in (1.22 m)
Length	11 ft 10 in (3.61 m)
Width	40 in (1.02 m)
Maximum Seating Capacity	4
Baggage Capacity	120 lb (54 kg)

DESIGN WEIGHTS & CAPABILITIES

Maximum Takeoff Weight	2,550 lb (1,157 kg)
Typically Equipped Empty Weight	1,717 lb (779 kg)
Maximum Useful Load	841 lb (381 kg)
Usable Fuel Capacity	53 gal (201 l)

PERFORMANCE

Maximum Cruise Speed	124 kts (230 km/hr)
Range (45-min reserve, 45% power, 10,000 ft)	638 nm (1,181 km)
Rate of Climb at Sea Level	730 ft/min (223 m/min)
Ceiling	14,000 ft (4,267 m)
Takeoff Distance to 50 ft	1,630 ft (497 m)
Landing Distance (over 50-ft obstacle)	1,335 ft (407 m)

POWERPLANT

Engine	Lycoming IO-360-L2A
Horsepower	180 hp
Propeller	Two-Bladed Fixed Pitch
TBO	2,000 hours



Cessna Aircraft Company

cessna.com

1.800.4.CESSNA

+1.316.517.6056

CESSNA AIRCRAFT COMPANY

ONE CESSNA BLVD.

WICHITA, KS 67215

ISO 9001-CERTIFIED

SKYHAWK SP 3/12



Cessna
A Textron Company