

THE NEW DEFINITION OF ULTIMATE PERFORMANCE.

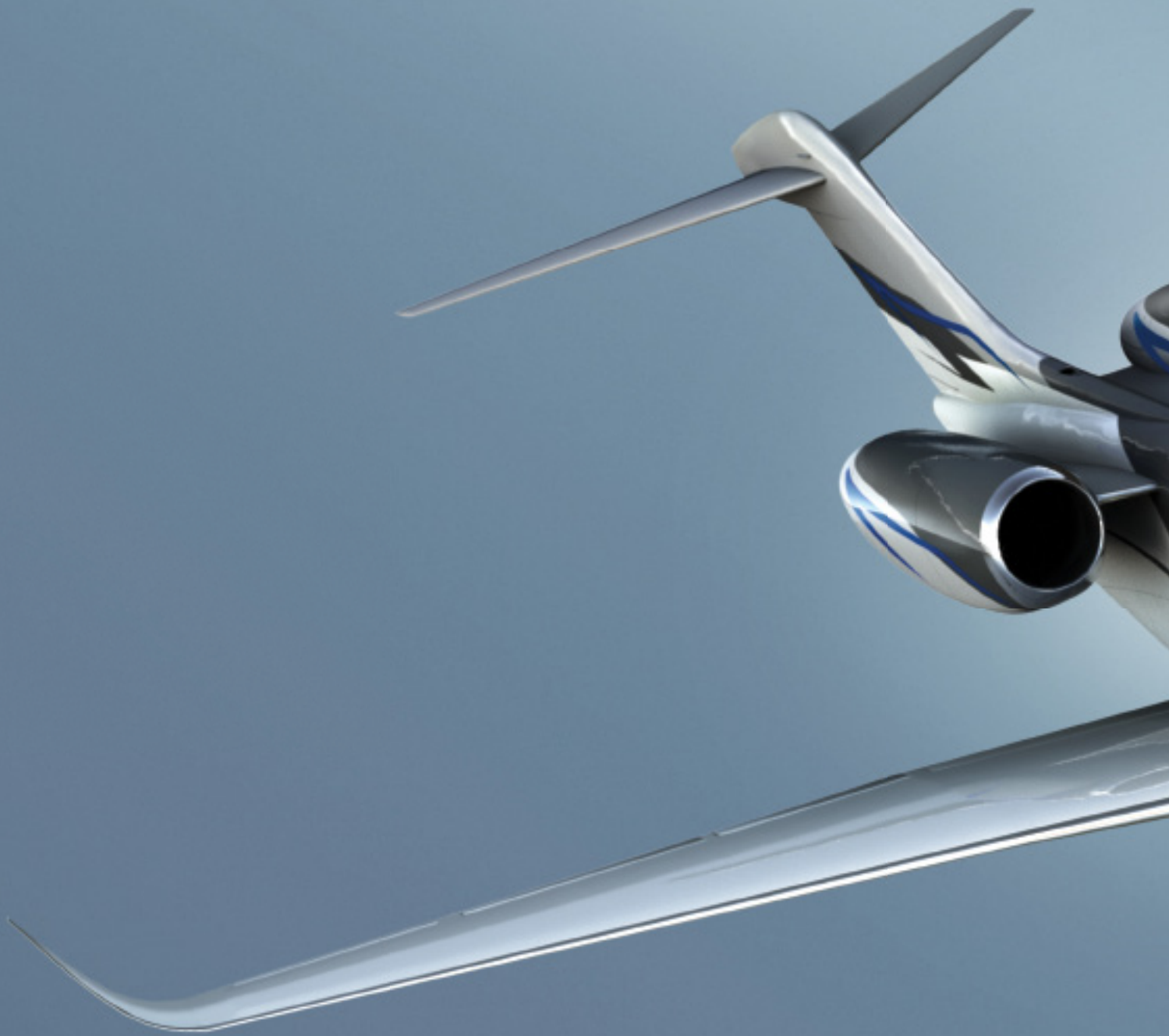


THE

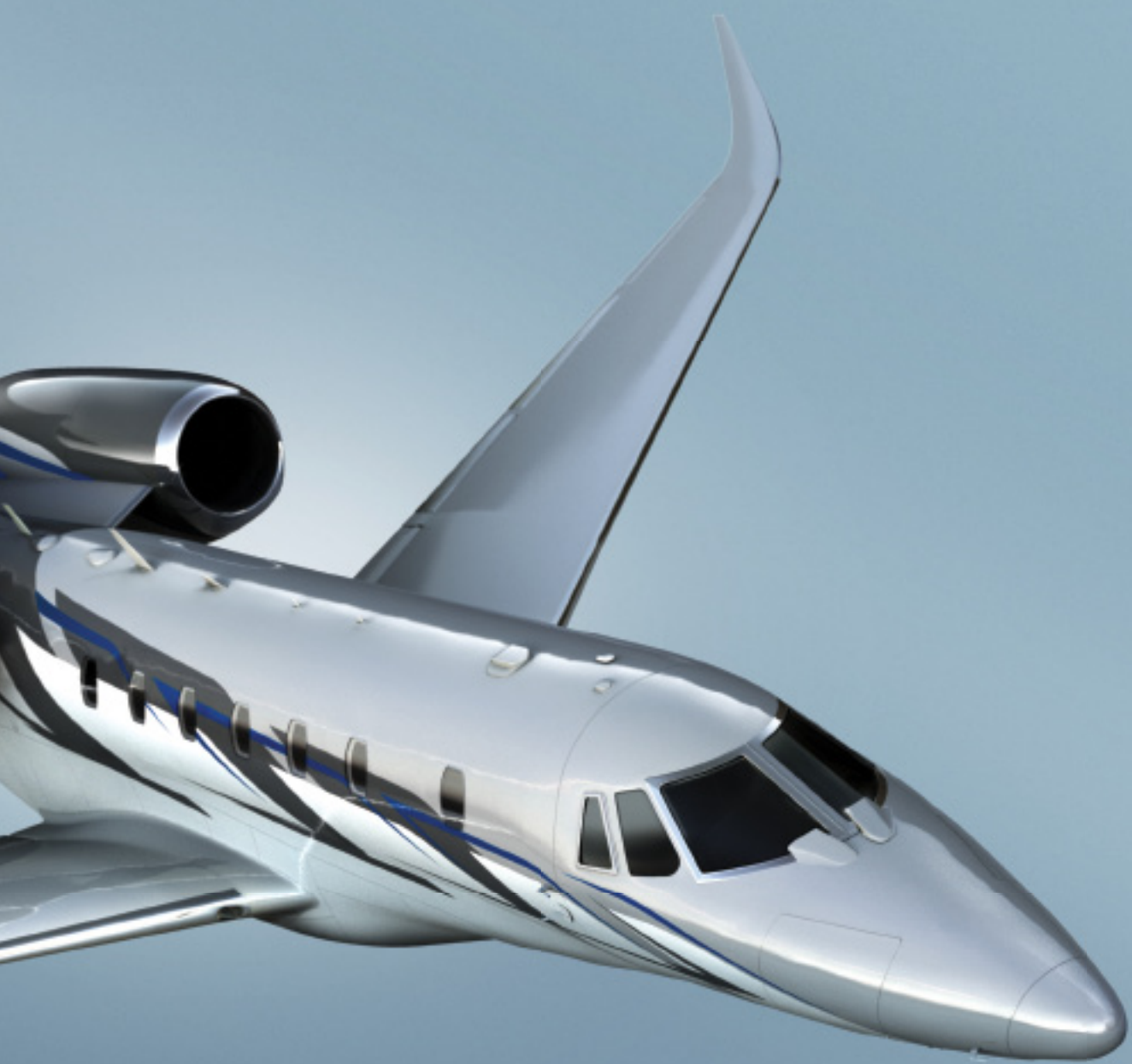
A WHOLE NEW WORLD OF HURT FOR THE SPACE-TIME CONTINUUM.

TEEN





Introducing The Ten, the new definition of ultimate performance in a business jet—with capabilities so dominating that Roman numerals simply didn't do it justice. The Ten flies faster and farther than its famed predecessor. Its interior has been completely reimagined, and is unlike any Citation before it. The cockpit is revolutionary. Just when you thought it was safe to shelve the record books, The Ten arrives. So our condolences to the competition. And to time and space for that matter.





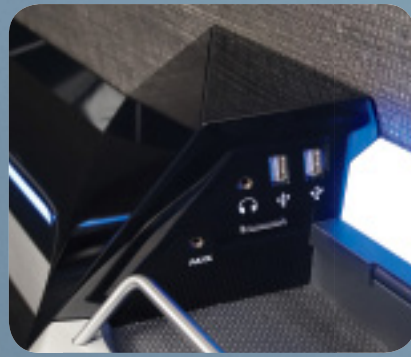


**BOLD
STYLE**

Sleek. Dynamic. Powerful. Words normally reserved for performance apply naturally to the completely reimagined interior of The Ten. We've extended the fuselage, providing more legroom and room to recline. Added customizable ambient lighting. More storage space and closets designed to fit today's laptop bags. What little time you'll spend in the world's fastest business jet will be time well spent.



The new tabletop shelf design allows you to store personal loose items close at hand.



At each seat, connect all of your personal electronic devices into one convenient panel.



Stow more belongings with additional storage space throughout the cabin.



LEGRROOM

With 36 inches between seats, stretch out with more legroom in the forward club.

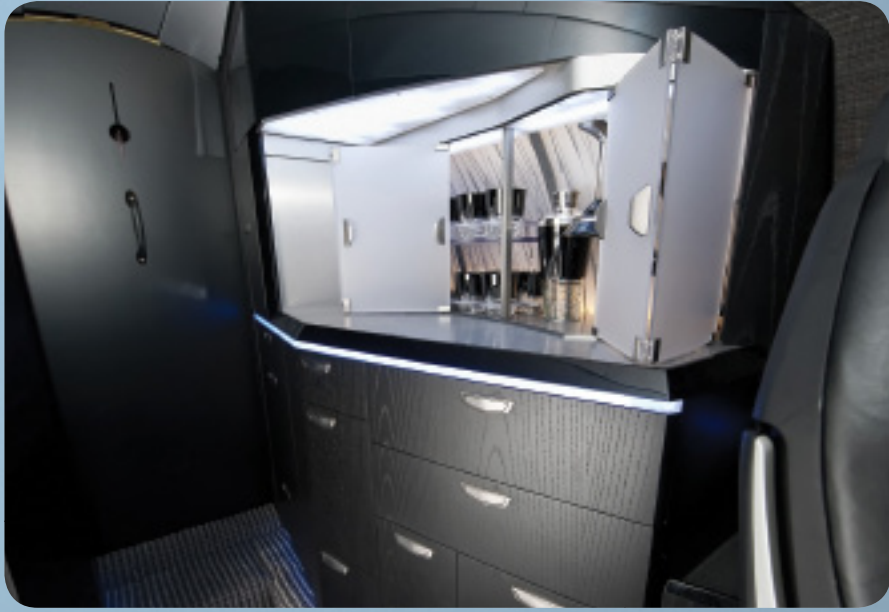
ROOM TO RECLINE

The Ten heightens comfort with a new ergonomic seat design. Relax with more room to recline, optional adjustable lumbar support and footrests standard on forward-facing seats.





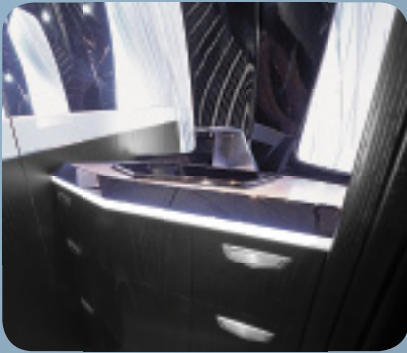
CMS Fully integrated and completely immersive, The Ten's Cabin Management System delivers ultimate touch screen control to the passenger. Woven organically into the cabin design, the CMS doesn't impinge on personal space as it maximizes the digital entertainment experience, from web to movies to moving maps. Its fiber-optic system is future-friendly, accommodating anything next-gen technology throws its way.



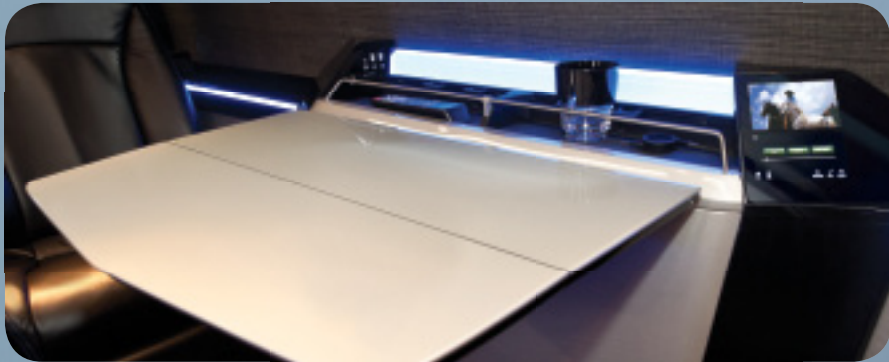
Elegant, modern and inviting, the large galley offers expansive space and storage for food and beverage service in flight.



Everything from armrests to seat-recline controls express the cabin's clean, sleek design philosophy.



Highlighted with gorgeous accent lighting, the new vanity exemplifies sophistication.



The Ten interior features radically new aesthetics. The latest advances in ergonomics. And rethought design where everything from cabin management displays to tables are natural extensions of the cabin itself.



WINGLETS

Standard on The Ten, winglets deliver greater performance, including speed at altitude, hot and high performance, and improved payload.

ENGINES

New Rolls-Royce engines crank up more thrust during takeoff, climb and cruise.

SPEED

Yes, there is a speed beyond fastest. The Ten outperforms its powerful predecessor, the speed-record champion. New York, L.A. and London have never been this close together.

**THE NEW
DEFINITION OF ULTIMATE
PERFORMANCE.**

CABIN MANAGEMENT SYSTEM

The Ten's Cabin Management System from Heads Up Technologies integrates a robust flow of data throughout the cabin, putting everything from digital communication and entertainment to aircraft diagnostics at your fingertips.

RANGE

With improved maximum takeoff weight, increased engine thrust and new winglets, The Ten carries more payload even farther.

ADVANCED AVIONICS

The Garmin G5000® suite gives The Ten crew ultimate situational awareness, through a touch screen interface, synthetic vision, split screen capabilities and more.

CABIN

The fuselage has been extended 15 inches, creating more room to move around, more storage and more comfort.





**GARMIN
G5000**

Introducing revolutionary avionics worthy of The Ten. The Garmin G5000 integrated flight deck represents the most intuitive pilot-aircraft interface ever seen in a business jet. Three 14-inch LCD flight displays greatly increase the information area available to the pilot. Four user-friendly touch screen control panels offer unmatched ease of access, reduced pilot workload and a pristine cockpit layout. Add operational capabilities such as WAAS LPV and RNP approaches, and you have breakthrough avionics that truly break the mold.



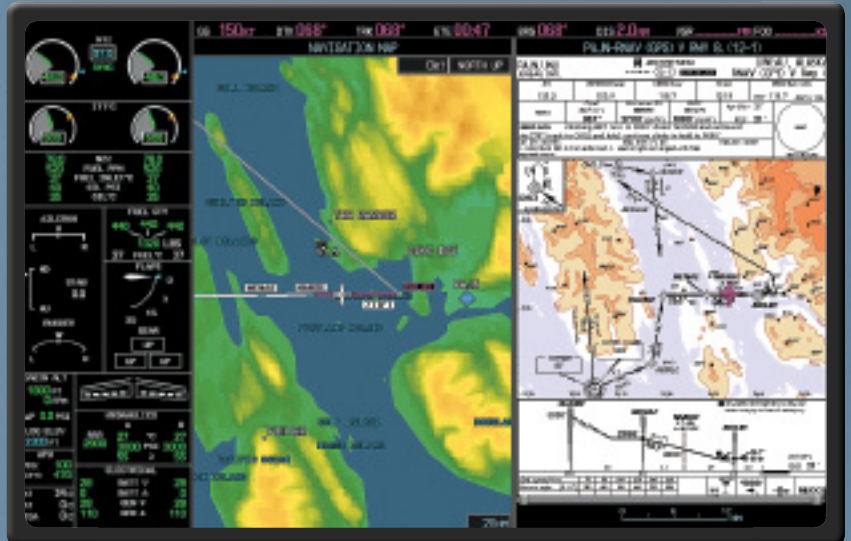
SYNTHETIC VISION

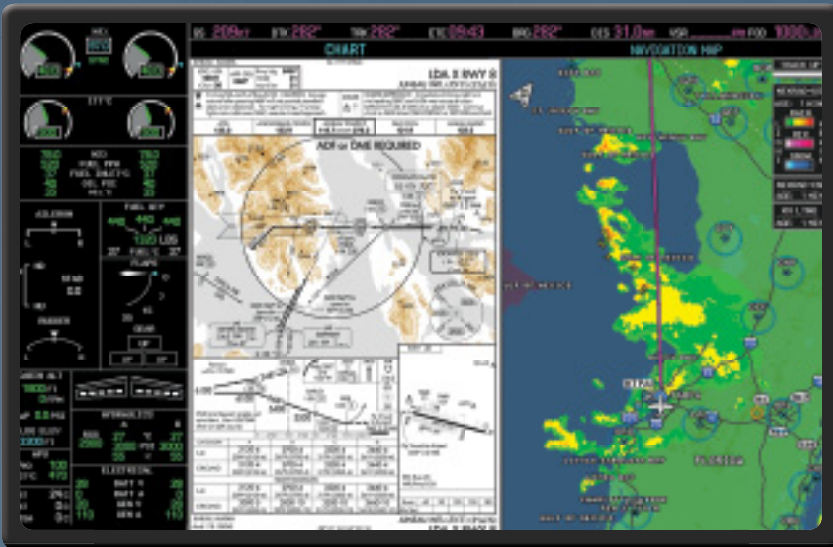
Garmin SVT™ synthetic vision technology presented on the primary flight displays provides the crew with a total, virtual reality view of runways, terrain, traffic and obstacles—everything beyond the windshield. An inset window can simultaneously display a top-down moving map view with terrain, weather and traffic information.



MOVING MAP

Detailed Garmin moving map features include flight plan, terrain, airspace, weather and traffic information. Electronic charts with aircraft position overlay provide dynamic situational awareness during approach. And Garmin's SafeTaxi™ system dramatically improves awareness of position on the airport surface during taxi operations.





SPLIT SCREEN

The high-resolution multifunction display features split screen capability, expanding the amount of information that can be simultaneously presented to the crew. A dedicated Engine Indication System window allows for continuous monitoring of engine, flight control, hydraulic and electrical system parameters.

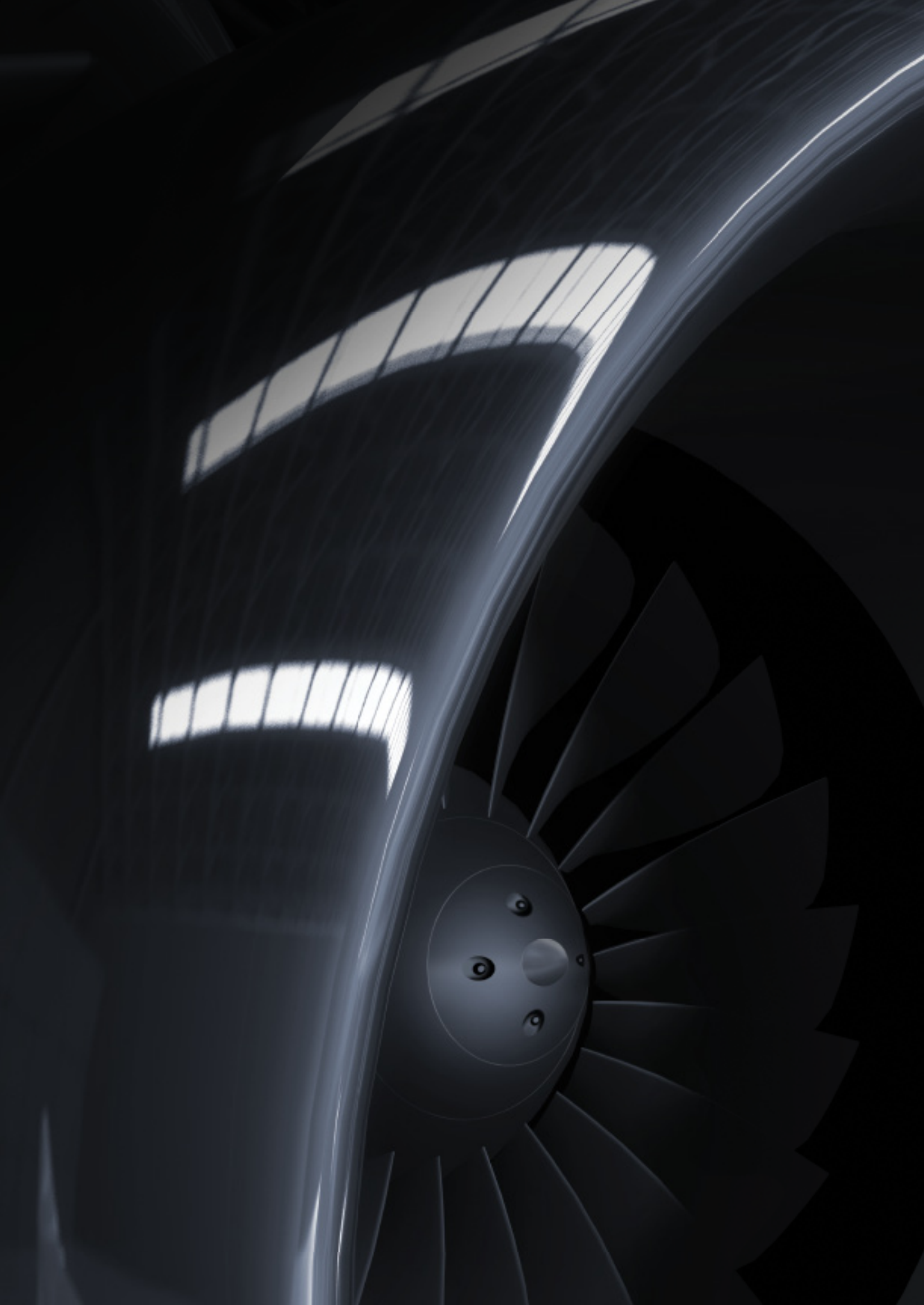


WEATHER

The G5000 provides XM WX satellite graphical weather capability in the continental United States. This provides the crew with real-time weather information, including NEXRAD imagery, echo tops, winds aloft, METAR data and more. An optional worldwide graphical weather system is also available.

TOUCH SCREEN CONTROL PANELS

Each of the four touch screen control panels offers the crew consistent and highly intuitive control over a wide range of aircraft functions. Featuring smartphone-like icons and dynamic scrolling menus, they allow the pilots to tune the radios, adjust audio volume levels, enter flight plans, configure display information, manage aircraft systems, handle controller-pilot datalink communications and more.



**ULTIMATE
POWER**

New Rolls Royce AE3007C2 engines with redesigned fan blades deliver more thrust at takeoff, climb and cruise. Plus, an increase in the maximum takeoff weight allows you to carry more payload. With performance like this, we'll be skipping the wind tunnel and going straight to a particle accelerator.



SPACE AND TIME ARE NOW AT YOUR MERCY.

9% MORE THRUST
DURING CLIMB.

7% MORE THRUST
DURING CRUISE.

4% MORE THRUST
AT TAKEOFF.

	CITATION X		THE TEN	
Maximum Ramp Weight	36,400 lb	16,511 kg	36,900 lb	16,737 kg
Maximum Takeoff Weight	36,100 lb	16,375 kg	36,600 lb	16,601 kg
Maximum Zero Fuel Weight	24,400 lb	11,068 kg	24,978 lb	11,330 kg
Maximum Fuel Capacity	12,931 lb	5,865 kg	12,931 lb	5,865 kg
Typical Basic Operating Weight <small>(2 crew, 200 lb each)</small>	22,100 lb	10,024 kg	22,464 lb	10,189 kg
Maximum Payload	2,300 lb	1,043 kg	2,514 lb	1,140 kg
Full Fuel Payload	1,369 lb	621 kg	1,505 lb	683 kg
Takeoff Performance <small>(ISA, MTOW, Dry Runway)</small>	5,140 ft	1,567 m	5,150 ft	1,570 m
Climb Performance <small>(ISA, MTOW)</small>	FL430 in 28 minutes		FL450 in 23 minutes	
Maximum Cruise Speed <small>(35,000 ft, Mid-Cruise Weight)</small>	525 ktas / 972 km/h		527 ktas / 976 km/h	
Speed at Altitude <small>(ISA)</small>	507 ktas / 940 km/h at FL430 499 ktas / 925 km/h at FL450 486 ktas / 901 km/h at FL470 460 ktas / 852 km/h at FL490		511 ktas / 947 km/h at FL430 504 ktas / 934 km/h at FL450 495 ktas / 917 km/h at FL470 479 ktas / 888 km/h at FL490	
Range <small>(Full Fuel, ISA, Zero Wind, NBAA IFR 200 nm alt, M 0.82)</small>	3,052 nm	5,652 km	3,242 nm	6,004 km
Range <small>(Full Fuel, ISA, Zero Wind, NBAA IFR 200 nm alt, HSC)</small>	2,896 nm	5,363 km	3,170 nm	5,875 km
Trip Time and Fuel <small>(NBAA IFR 200 nm alt, HSC)</small>	2,500 nm / 4,630 km trip 5:12 at FL 470 9,524 lb / 4,320 kg fuel		2,500 nm / 4,630 km trip 5:10 at FL 470 9,379 lb / 4,254 kg fuel	

Performance specifications are preliminary estimates and subject to change.

THE TEN'S EXTENDED RANGE AND ENHANCED SPEED MAKES THE GLOBE YOUR VILLAGE.



New York > London Singapore > Tokyo
 London > Dubai Boston > San Francisco
 Miami > Seattle

This represents a very short list of origin and destination pairs in reach of The Ten without refueling.

Based on preliminary performance figures. Assumptions: NBAA IFR Reserves (200 nm), 85% Boeing winds, great circle distances.



**WORLD
CLASS
SUPPORT**

The Ten is supported by innovative service programs and an unparalleled, global network of more than 40 Cessna-owned Citation Service Centers and Authorized Service Centers. Through its onboard integrated data system, The Ten itself has been designed for fast, easy diagnostics. Our ServiceDirect program delivers a wide range of maintenance services outside the network. And when time is critical, our AirResponse Team is ready with a dedicated Citation to deliver parts and/or technical personnel within hours.

CASSNA CITATION

www.cassnasupport.com

ART Air Response Team



B E Y

B

E V E R Y

YOND X.

EYOND

YTHING.

THE RACE AGAINST TIME HAS A NEW FRONTRUNNER.

Beyond X. Beyond fast. Beyond everything. The Ten becomes the most dominant aircraft this side of the sound barrier. See and learn more about the evolution of ultimate performance at [TheTenArrives.com](https://www.thetenarrives.com).



1-800-4-CESSNA

+1-316-517-6056

cessna.com

